

$\phi 132.5 \pm 0.05$
 INITIAL 20mm
 OF TUBE O.D.
 1.5mm A B

$\phi 127.8 \pm 0.0$
 CHAMFER DIA.
 .2mm A

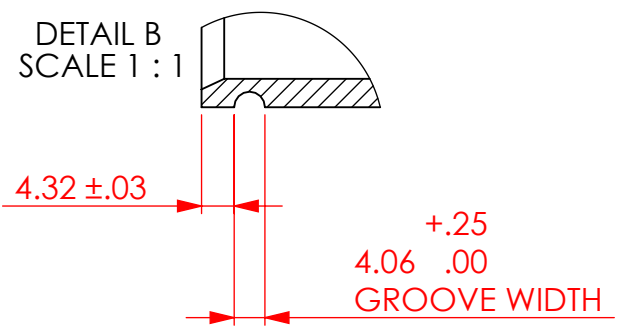
$\phi 125 \pm 0.2$
 INITIAL 10mm
 OF TUBE I.D.
 TO ENSURE FIT
 .2mm A

$\phi 128.4 \pm 0.05$
 (O.D. GROOVE DIA.)

$\phi 125.0$
 STOCK I.D.

VARIES
 MATERIAL
 DEPENDENT

NOTE: DIMENSIONS ARE TYPICAL ON BOTH ENDS OF THE PART. FOR OUT OF ROUND TUBES, ENDS MUST BE BORED TO DIMENSION SHOWN.



- NOTES:**
 1. BREAK AND DEBURR ALL EDGES .25mm MAX.
 2. CLEAN PART FOR USE IN A VACUUM ENVIRONMENT.
 3. PACKAGE PART TO PROTECT FROM DAMAGE AND TO ENSURE CLEANLINESS.

| | | | | | |
|--|------------------|--|--------------|--------------|-----|
| UNLESS OTHERWISE SPECIFIED: BREAK ALL CORNERS .015 Typ. | | SPUTTERING COMPONENTS, INC. 375 Alexander Dr. SW, Owatonna, MN 55060 | | | |
| imperial | metric | | | | |
| X.0 = ± .030 | X.0 = ± 1 | TITLE: QRM TARGET | | SCALE | REV |
| 0.X = ± .015 | 0.X = ± .5 | | | 1:2 | . |
| 0.XX = ± .010 | 0.XX = ± .25 | | | | |
| 0.XXX = ± .005 | 0.XXX = ± .125 | | | | |
| WEIGHT | SIZE | DATE DRAWN | PART NO. | SCALE | REV |
| DRAWN BY | B | 1/18/2013 | MOD NO. SCQT | 1:2 | . |
| DO NOT SCALE DRAWING | MATERIAL: VARIES | | FINISH: | SHEET 1 OF 1 | |