

Internal-Mount End Block **cMC-Series**

The cMC is designed to directly replace the Soleras compact end block or to use in new systems.

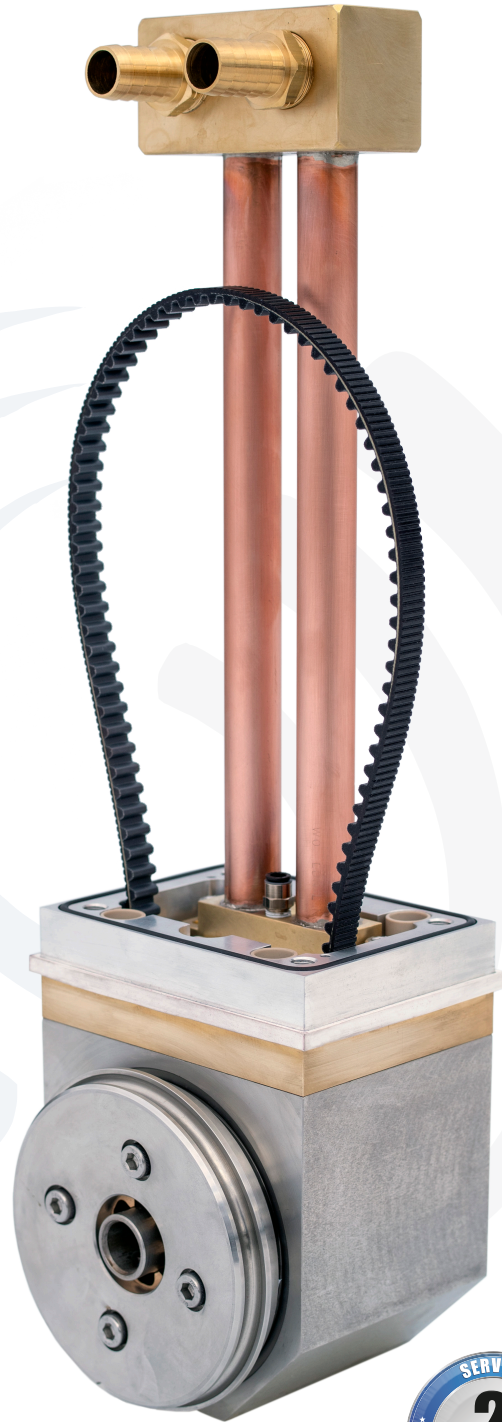
The cMC has a simple, singled-ended, belt-driven design with brushless power transfer and an outboard support for quick target changes, high reliability and easy, do-it-yourself maintenance.

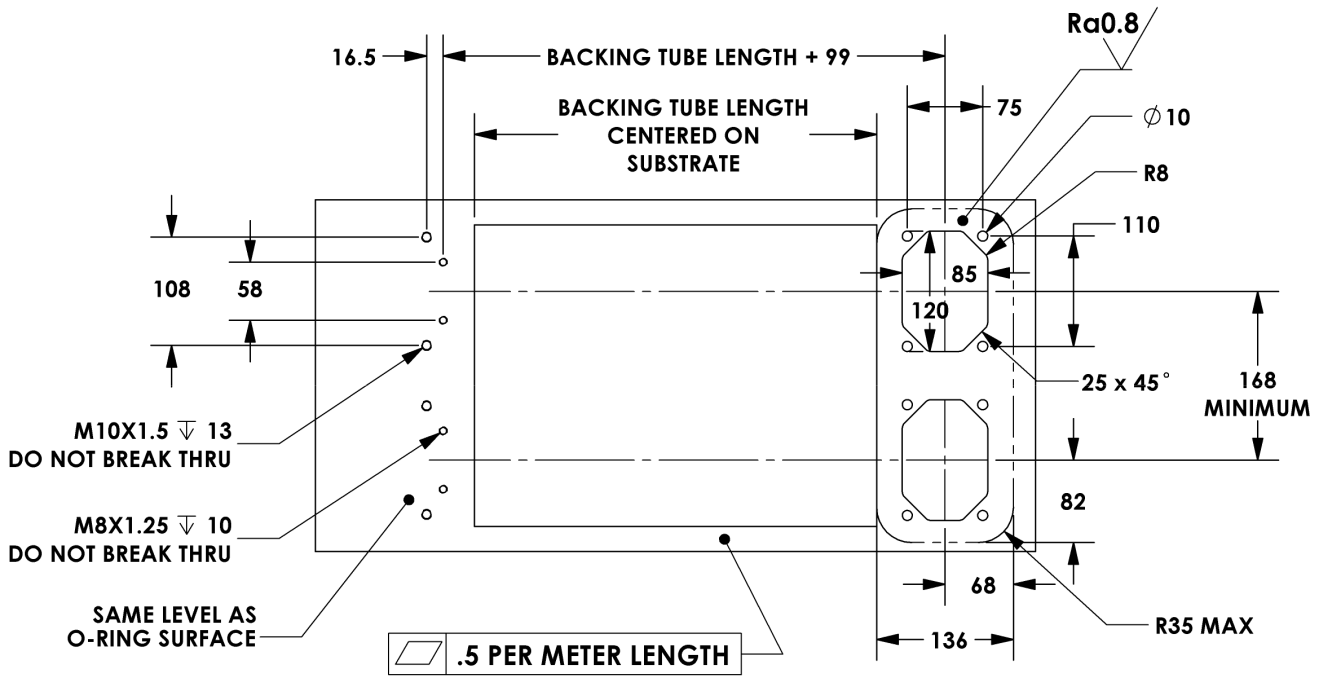
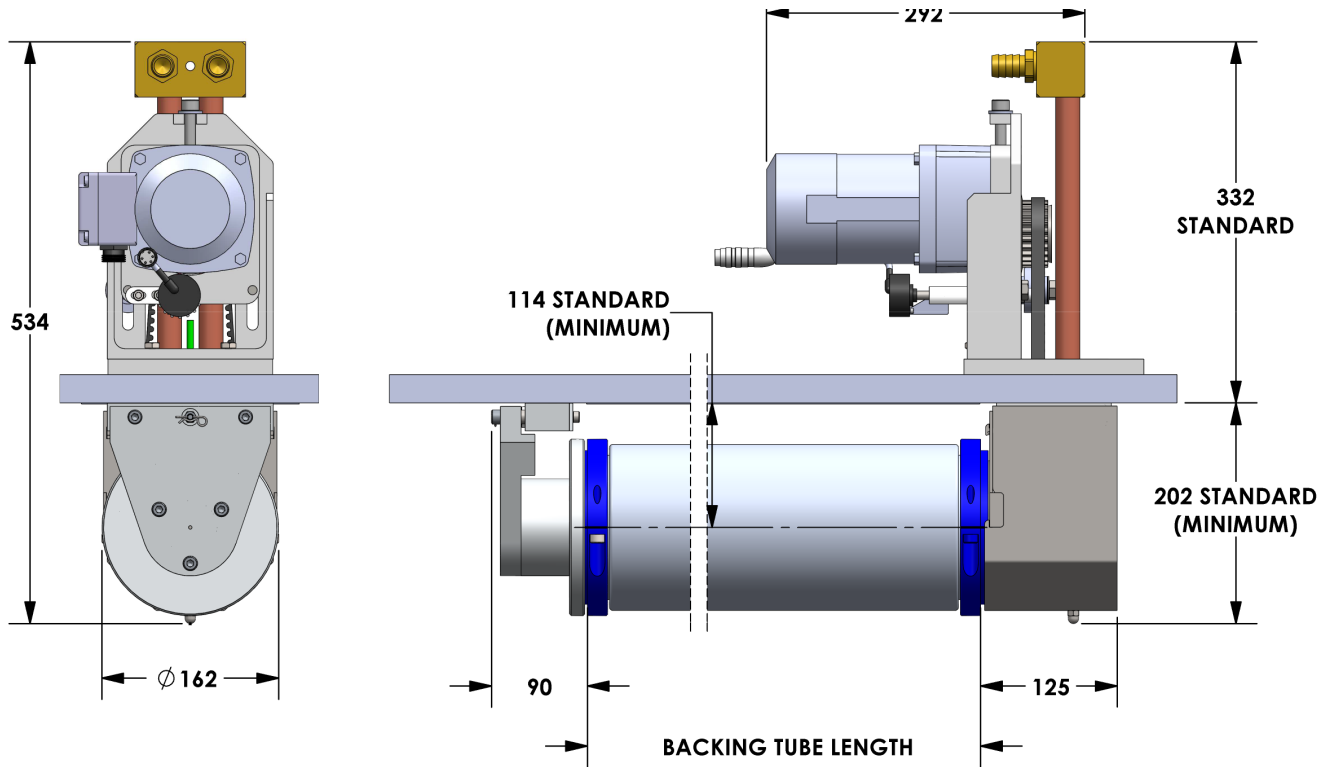
Upgrade from planar systems to increase the output and quality of your existing coater.

SCI can provide coater integration support.

TECHNICAL SPECIFICATIONS

| | |
|------------------------------|--|
| Electrical rating | ▶ 80 kW 1500 V, 180 A (DC or 80 kHz AC) |
| Mounting | ▶ Any orientation |
| Targets | ▶ 125 mm ID 2000 mm max. length |
| Maximum load | ▶ 1000 kg horizontal 200 kg vertical |
| Vacuum seal leak rate | ▶ $<3 \times 10^{-7}$ mbar·L/s |
| Maintenance (typical) | ▶ Seal kit and bushings every 2 years (1 hr); Static seals, bearings and belt after 10 years (3 hr) |





TOLERANCES
 XXXmm = ± 1.0 mm
 XXX.Xmm = ± 0.1 mm

Dimensions in mm