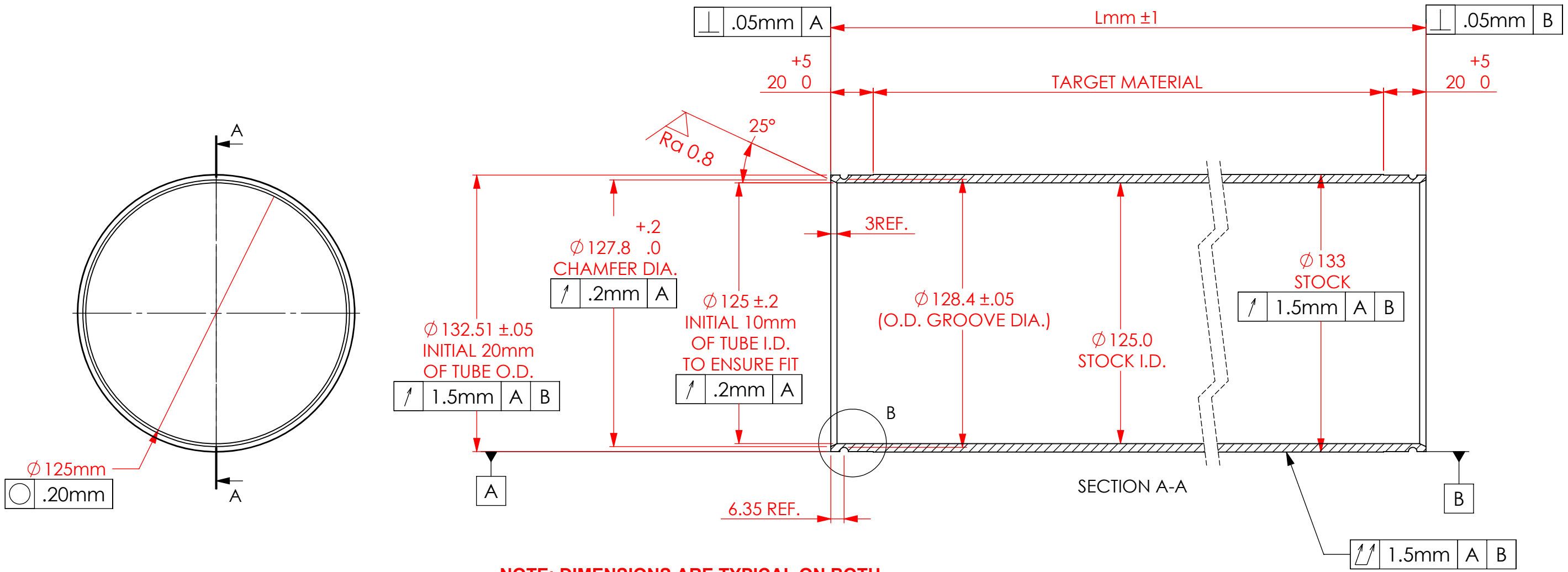
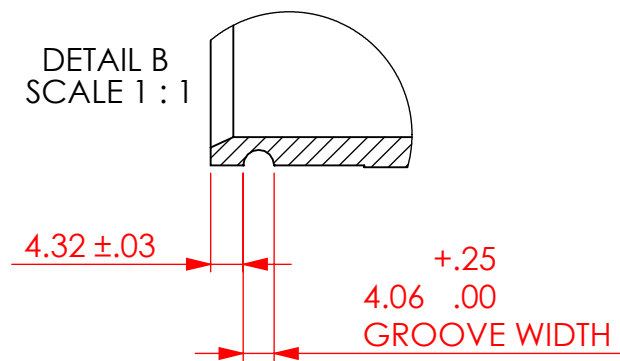


8 7 6 5 4 3 2 1

REVISIONS				
ZONE	REV.	DESCRIPTION	DATE	APPROVED
	F	UPDATED TOLERANCING	2/8/2010	DC



NOTE: DIMENSIONS ARE TYPICAL ON BOTH ENDS OF THE PART. FOR OUT OF ROUND TUBES, ENDS MUST BE BORED TO DIMENSION SHOWN.



- NOTES:**
- BREAK AND DEBURR ALL EDGES .25mm MAX.
 - CLEAN PART FOR USE IN A VACUUM ENVIRONMENT.
 - PACKAGE PART TO PROTECT FROM DAMAGE AND TO ENSURE CLEANLINES.

UNLESS OTHERWISE SPECIFIED:		<p>SPUTTERING COMPONENTS, INC. 375 Alexander Dr. SW, Owatonna, MN 55060</p>				
BREAK ALL CORNERS .015 Typ.						
imperial	metric	<p>TITLE: SCI METRIC MANDREL</p>				
X.0 = ± .030	X.0 = ± 1					
0.X = ± .015	0.X = ± .5					
0.XX = ± .010	0.XX = ± .25					
0.XXX = ± .005	0.XXX = ± .125					
WEIGHT		SIZE	DATE DRAWN	DWG. NO.	SCALE	REV
		B	11/24/04	SCM	1:2	F
DRAWN BY						
DO NOT SCALE DRAWING	MATERIAL: 133mm O.D. X 4mm WALL COLD DRAWN 304 STAINLESS STEEL				SHEET 1 OF 1	