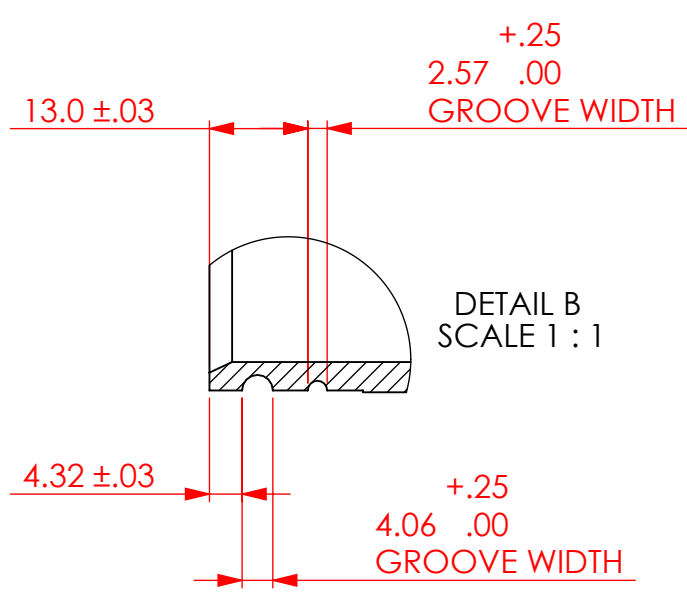
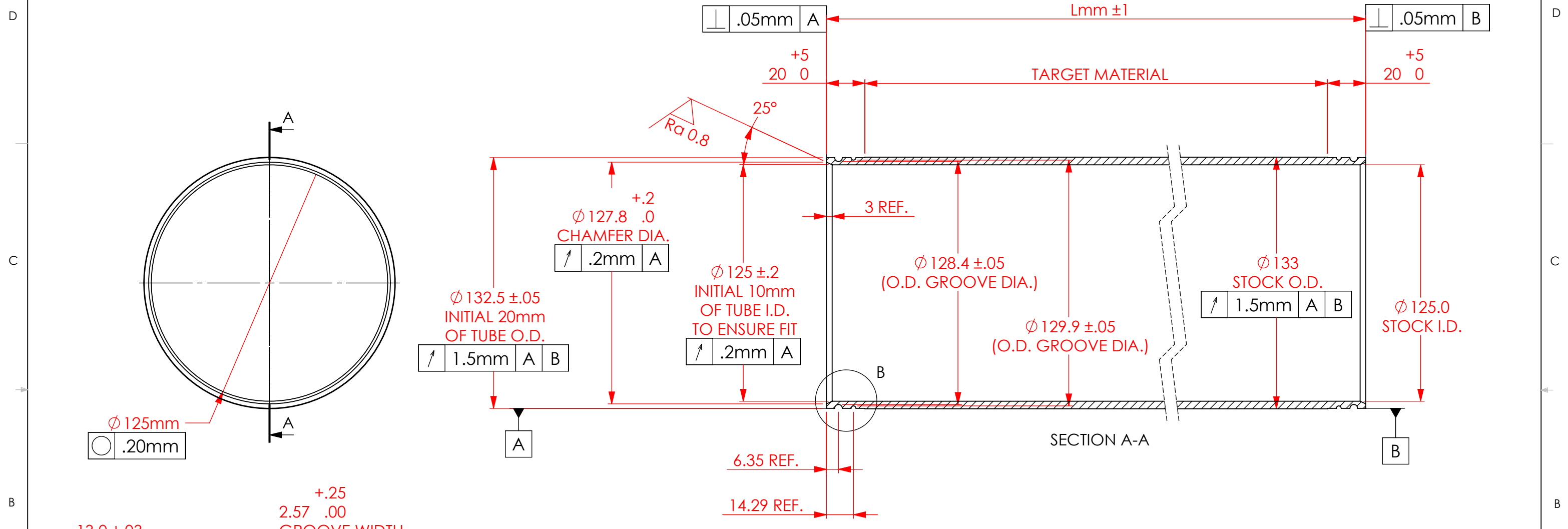


REVISIONS				
ZONE	REV.	DESCRIPTION	DATE	APPROVED
	A	UPDATED TOLERANCING	2/8/2010	DC



**NOTE: DIMENSIONS ARE TYPICAL ON BOTH ENDS OF THE PART. FOR OUT OF ROUND TUBES, ENDS MUST BE BORED TO DIMENSION SHOWN.**

- NOTES:**
1. MATERIAL: 133mm OD X 4mm WALL, COLD DRAWN 304 STAINLESS STEEL.
  2. BREAK AND DEBURR ALL EDGES .25mm MAX.
  3. CLEAN PART FOR USE IN A VACUUM ENVIRONMENT.
  4. PACKAGE PART TO PROTECT FROM DAMAGE AND TO ENSURE CLEANLINESS.

UNLESS OTHERWISE SPECIFIED: BREAK ALL CORNERS .015 Typ.		<p align="center"><b>SPUTTERING COMPONENTS, INC.</b> 375 Alexander Dr. SW, Owatonna, MN 55060</p>			
ALL MACHINED SURFACES TO BE $\sqrt{63}$					
IMPERIAL	METRIC	TITLE: SCI METRIC MANDREL FOR CANTILEVER			
X = ± .030	X = ± 1	SIZE	DATE DRAWN	PART NO. SCMC	SCALE
0.X = ± .015	0.X = ± .5	<b>B</b>		MOD NO.	1:2
0.XX = ± .010	0.XX = ± .25				
0.XXX = ± .005	0.XXX = ± .125	MATERIAL: NOTED			REV
DO NOT SCALE DRAWING		FINISH:			A
					SHEET 1 OF 1