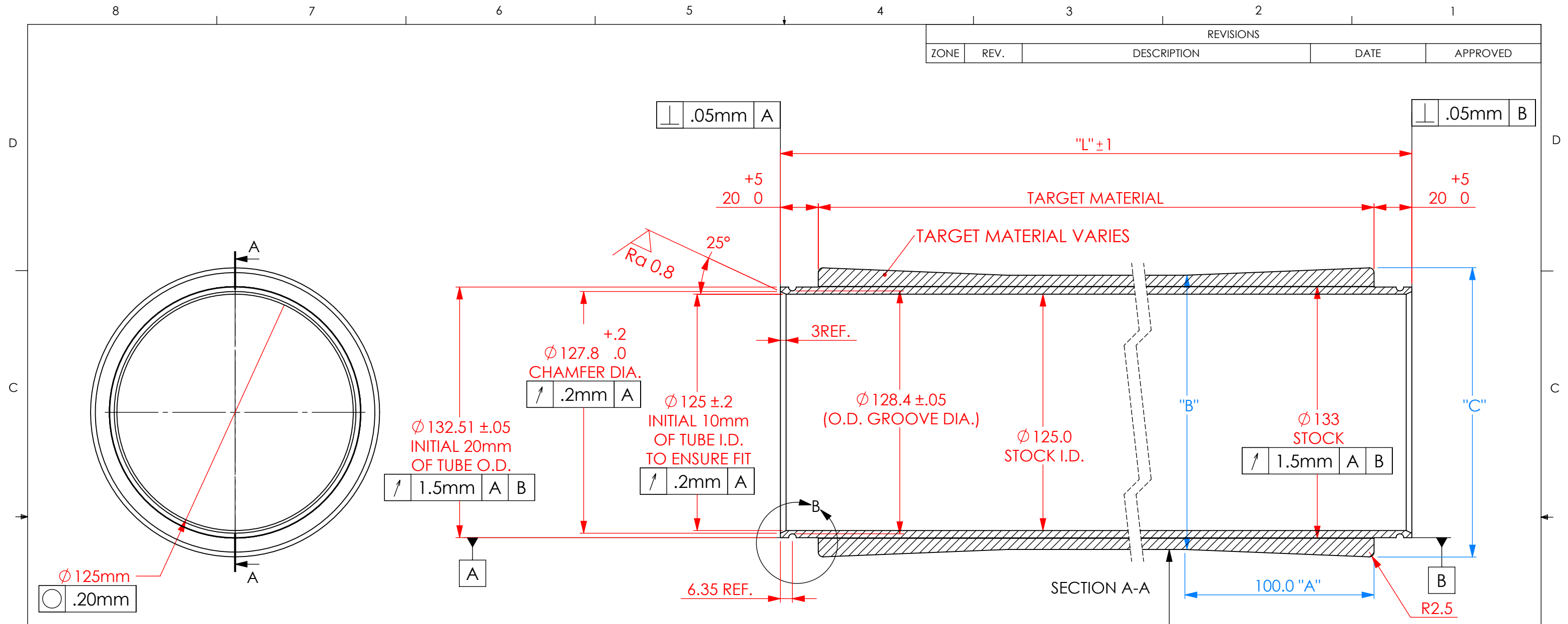
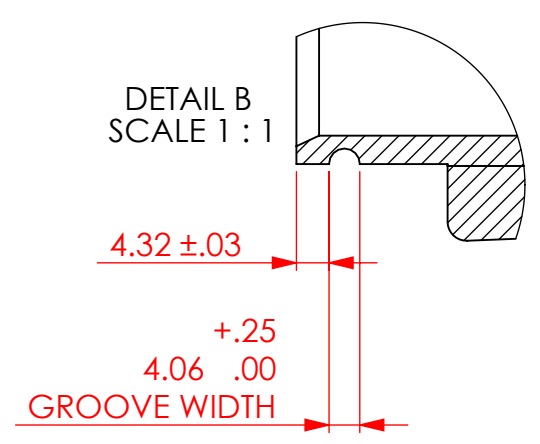


REVISIONS				
ZONE	REV.	DESCRIPTION	DATE	APPROVED



Ø 125mm  
○ .20mm



**NOTE: DIMENSIONS ARE TYPICAL ON BOTH ENDS OF THE PART. FOR OUT OF ROUND TUBES, ENDS MUST BE BORED TO DIMENSION SHOWN.**

**CALCULATIONS:**  
1) "A" IS CONSTANT  
2) "C" = "B" + 8

- NOTES:
- BREAK AND DEBURR ALL EDGES .25mm MAX.
  - CLEAN PART FOR USE IN A VACUUM ENVIRONMENT.
  - PACKAGE PART TO PROTECT FROM DAMAGE AND TO ENSURE CLEANLINESS.
  - BACKING TUBE MATERIAL:  
133mm OD X 4mm WALL, COLD DRAWN 304 STAINLESS STEEL.

UNLESS OTHERWISE SPECIFIED:  
BREAK ALL CORNERS .015 Typ.

ALL MACHINED SURFACES TO BE 63/√	
IMPERIAL	METRIC
X = ± .030	X = ± 1
0.X = ± .015	0.X = ± .5
0.XX = ± .010	0.XX = ± .25
0.XXX = ± .005	0.XXX = ± .125

DRAWN BY: **B**

DO NOT SCALE DRAWING

**SPUTTERING COMPONENTS, INC.**  
375 Alexander Dr. SW, Owatonna, MN 55060

TITLE: **SCI METRIC TAPERED TARGET**

SIZE <b>B</b>	DATE DRAWN	PART NO. <b>SCTT</b>	SCALE <b>1:2</b>	REV <b>A</b>
MATERIAL: NOTED		MOD NO.	FINISH:	

SHEET 1 OF 1