

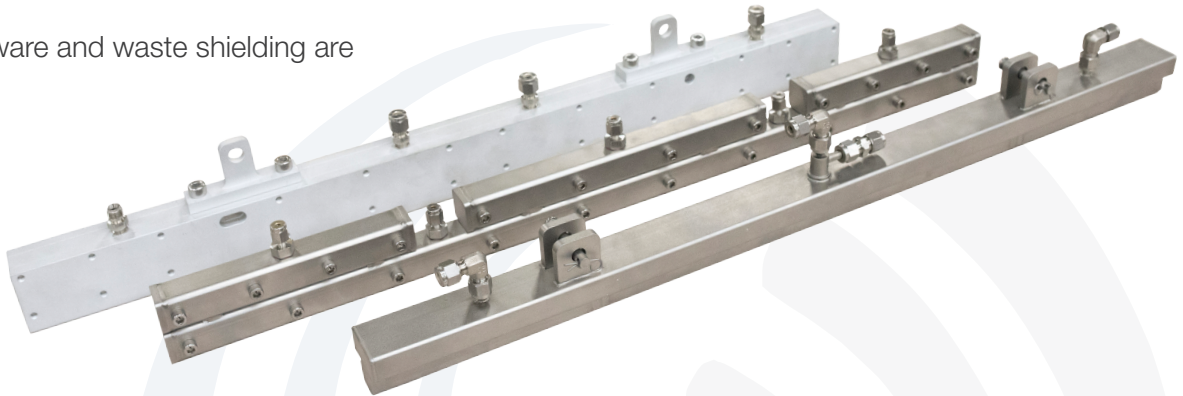
## Sputtering Accessories

# Gas Manifolds

Available in three models, SCI gas manifolds are segmented for main gas and additional process gases.

They have a robust, simple design and are easily cleaned.

Mounting hardware and waste shielding are included.



Model	Maximum Length	Outlet Type	Features
Binary (BGMA)	4000 mm	Non-replacable, non-adjustable	Highest uniformity (<math>< \pm 1.2\%</math>) Fast reactive sputtering response time
Square Tube (SGMA)	4000 mm	Replacable, adjustable	Adjustable uniformity for non-uniform systems
T-Bar (TGMA)	1500 mm	Non-replacable, non-adjustable	Compact design: for use when limited space is a factor